

# COMBO WATER TESTER

NEW

## Handheld combo pH/EC/TDS/SALT/D.O. 84051



84051

- Large LCD to display multiple parameters in turns: PH, Conductivity or TDS or Salinity, Dissolved oxygen & Temperature (by using different probes in turns)
- Fast D.O. Measuring
- Accurate replaceable probes with anti-collision cap
- Auto ranging for conductivity measurement
- Manually altitude/salinity compensation for D.O. Reading
- Multiple points calibration: 3 points for pH, 1point for D.O., 4 points for conductivity



Auto Power Off



Auto Temp. Compensation



Memory Recall



Manual Logging



Metric/Imperial



Low Battery



Backlight



PH

EC/TDS/SALT

D.O.

Probes



Accessory

Model	84051
pH range/resolution	2.00~12.00/resolution :0.01
pH accuracy	+/-0.1
Cond. range	0~199.9, 0~1999uS/cm, 0~19.99, 0~150.0mS/cm
Cond. accuracy	+/-1% F.S +/- 1 digit
Cond. resolution	0.1uS/cm, 1uS/cm, 0.01mS/cm, 0.1mS/cm
TDS. Range (f is TDS factor)	0~199.9*f, 0~1999*f ppm, 0~19.99*f, 0~150.0*f ppt
TDS. Accuracy/res.	+/-1% F.S +/- 1 digit; res.:0.1,1ppm;0.01, 0.1ppt
TDS Factor	0.30~1.00
Salinity range	0~10.00ppt; 0~42.0ppt(SEA WATER)
Salinity accuracy/res.	+/-1% F.S +/- 1 digit; res.: 0.01 ppt, 0.1ppt
D.O. range	0.0~199.9% (0.0~30.0mg/L)
D.O. Accuracy/res.	+/-3% of F.S. +1 digit ; res.: 0.1
Temp. range	-5~60.0°C
Temp. Accuracy/res.	+/-0.5°C ; 0.1
Compatible probe	pH probe, EC probe and D.O probe Could be all used on one meter at the same time
LCD size(mm)	26(H)x44(W)
Operating temp.&RH%	0~50°C, Humidity<80%
Storage temp.&RH%	0~60°C, Humidity < 90%
Dimension(mm)	175(L)x70(W)x33(H)
Weight	200g
Power	4PCS AAA Batteries
Standard Package	Meter/Manual/Carry case/Battery
Standard Probe	PH probe/Cond. Probe/D.O.Probe/D.O. Electrolyte/ 2 Membrane set/Cable clip (User can decide which probe to be included as standard)

### Ordering Code

- VZ84051AZ0, 84051 meter only
- VZ84051AZ1, 84051 meter +DO probe
- VZ84051AZ2, 84051 meter +pH+EC probe
- VZ84051AZ3, 84051 meter +pH+EC+DO probe
- VZ863PAZ, low ion pH probe for 86031/86021/84051
- VZ833PAZ, EC probe for 86031/86021/84051
- VZ843PAZ, DO probe for 86031/86021/84051
- VZ843PAZ1, DO membrane kit for VZ843PAZ

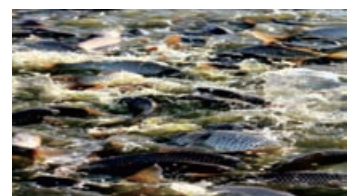
### Contact :

EASTERN ENERGY CO.,LTD. (HEAD OFFICE)

40/4 Vitoondumri Rd., Banbueng, Banbueng, Chonburi 20170

Tel: 0-3844-6117 Fax: 0-3844-6200

Email: info@ete.co.th



www.ete.co.th