



DT-176CV2

TRUE RMS VOLTAGE & CURRENT DATA LOGGER

Datalog up to 256,000 Reading with user programmable sample rate from 1second to 24 hours. This Datalogger is designed and produced according to IEC61010 safety standard, and leave factory with best status after passed inspection.

With the CEM Voltage and Current Data Logger DT-176CV2, you can monitor and log data (Voltage / Current, Current / Current and Voltage / Voltage) over long periods of time and then easily transfer the data to the PC for viewing and evaluation. The LCD Display provides real time data, Max / Min data and time information.

FEATURES

- Measure True RMS AC Voltage (600V) or Current (200A)
- Readings can be downloaded to your PC via the USB interface and analyzed using the included software or exported to a spreadsheet
- LCD indicates time/date, current readings, and Min/Max
- Normal, Peak and Capture (user-specified trigger level) recording modes
- Auto Power off and battery check
- Complete with current clamp, test leads, USB cable, Windows® compatible software, universal AC Adaptor, and four AAA batteries
- Waveform for Voltage and current can be stored.
- Datalog upto 256,000 readings.
- Captured readings can be downloaded to your using the included USB cable and software, for further analysis, Readings can also be expect into a spreadsheet for creating charts and graphs

Contact :

EASTERN ENERGY CO.,LTD. (HEAD OFFICE)
40/4 Vitoondumri Rd., Banbueng, Banbueng, Chonburi 20170
Tel: 0-3844-6117, Fax: 0-3844-6200
Email: info@ete.co.th / sale@ete.co.th
Web: www.eastern-energy.com

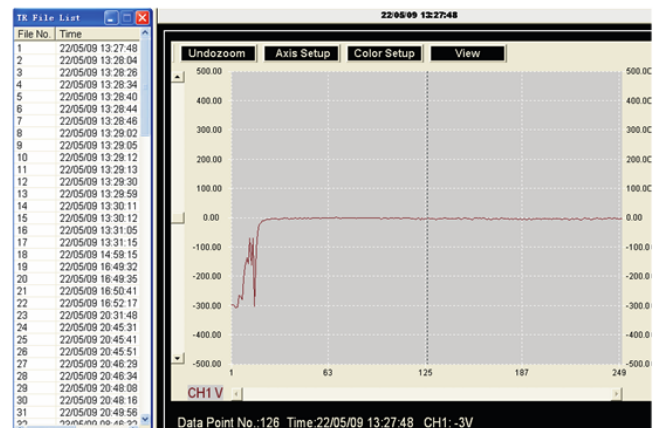
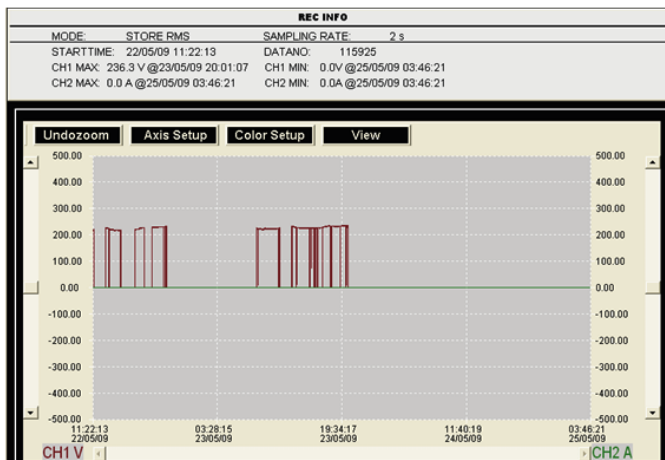
EASTERN ENERGY CO.,LTD. (RANGSIT BRANCH)
801/192 Moo.8 Kukot, Lamlukka, Pathumthani 12130
Tel: 0-2531-3833, Fax: 0-2531-3833
Email: info@ete.co.th / sale@ete.co.th
Web: www.eastern-energy.com

SPECIFICATIONS

Display	:	Multi-function LCD
Maximum Data Point	:	256,000 Values
Channels	:	Dual Channel, TRMS AC Voltage or Current
Sample Rate	:	1s to 24h Selectable
Analysis Software	:	2000 / XP / Vista / Windows 7 & 8
Data Output	:	USB Port
Current Clamp Jaw Opening	:	0.5" (12.7mm)
Open input indication	:	"LO" Appears on the LCD
Low Battery Indication	:	Battery Symbol Appears on the LCD
Power Supply	:	4AAA Batteries and 1CR 3V memory Button Battery (Cr2032 or Equivalent)
Battery Life	:	5 Days (Approximately)
AC Adaptor	:	9V, 0.5A
Standards	:	CE, CAT III 600V, for inside use, Maximum height 2000 meters
Operating Temperature	:	0°C to 50°C, -32°F to 122°F
Operating Humidity	:	< 70% RH
Storage Temperature	:	-20°C to 60°C (-4°F to 140°F)
Storage Humidity	:	< 80% Relative Humidity
Dimensions	:	4.5 x 2.5 x 1.3" (114 x 63 x 34mm)
Weight	:	8.70z. (248g)

Function	Range	Basic Accuracy
Voltage (40Hz to 1kHz)	10V to 600.0VAC	± 2.0% r± 1V
Current (50/60Hz)	10A to 200.0A	± 2.0% r± 1A

SAMPLE SCREEN SHORT



Contact :

EASTERN ENERGY CO.,LTD. (HEAD OFFICE)
 40/4 Vitoondumri Rd., Banbueng, Banbueng, Chonburi 20170
 Tel: 0-3844-6117, Fax: 0-3844-6200
 Email: info@ete.co.th
 Web: www.eastern-energy.com

EASTERN ENERGY CO.,LTD. (RANGSIT BRANCH)
 801/192 Moo.8 Kukot, Lamlukka, Pathumthani 12130
 Tel: 0-2531-3833, Fax: 0-2531-3833
 Email: info@ete.co.th
 Web: www.eastern-energy.com