

Dual Technology Features Automatic Selection of Magnetic Induction or Eddy Current Measurement Techniques. The measuring data is easily transferred to PC for edit and storage.

Features	
Non-magnetic coatings(e.g. paint, zinc)on steel	
Insulating coatings(e.g. paint)on no-ferrous metals	
No-ferrous metals coatings on insulating substrates	
Menu operation system	
Two working modes: DIRECT and GROUP mode	
Statistic Display: AVG, MAX, MIN, NO., S.DEV	
One point calibration, two points calibration and basic calibration easily	
Delete single readings and all group readings easily	
Low battery, error indication	
Memory for 2500 readings(50 GROUP readings)	
4 levels of battery indication	
Error indication	
Bluetooth interface	
Easily adapt to lighting conditions with 8 levels of backlight	



iCTT software
for Coating Thickness Tester

Model 157

Specifications		
Sensor probe	F	N
Working principle	magnetic induction	Eddy current principle
Measuring range	0~2000um	0~2000um
Guaranteed tolerance (of reading)	(+/- 2%+2)um	(+/- 2%+2)um
Repeatability	(+/- 1%+1)um	(+/- 1%+1)um
Low range Precision	0.1um	0.1um
Minimum curvature radius	1.5mm	3mm
Diameter of Minimum area	7mm	5mm
Basic critical thickness	0.5mm	0.3mm

Meterbox iCTT - In the worldwide, Meterbox iCTT is the first issue for the coating thickness tester to communicate with the smartphone by bluetooth. Friendly user interface, multifunction scene mode, standard reference data bring a new user experience and make the works relaxed. Meterbox iCTT allows to read the measured real time data by bluetooth, the displayed table and chart can be recorded and analysed. The user can check the history data anytime and manage the measured readings easily by Meterbox iCTT.



Size(HxWxD): 120mm x 60mm x 40mm

Weight: 120g

Accessories:

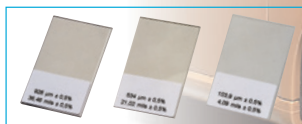
Two “AAA” batteries, CD, Calibration Iron, Calibration Aluminum, Precision Standard, gift box with carrying case.



Calibration Iron



Calibration Aluminum



Precision Standard



EASTERN ENERGY

Contact :

EASTERN ENERGY CO.,LTD. (HEAD OFFICE)
40/4 Vitoondumri Rd., Banbueng, Banbueng, Chonburi 20170
Tel: 0-3844-6117, Fax: 0-3844-6200
Email: info@ete.co.th / sale@ete.co.th
Web: www.eastern-energy.com

EASTERN ENERGY CO.,LTD. (RANGSIT BRANCH)
801/192 Moo.8 Kukot, Lamlukka, Pathumthani 12130
Tel: 0-2531-3833, Fax: 0-2531-3833
Email: info@ete.co.th / sale@ete.co.th
Web: www.eastern-energy.com